

Cynomolgus CD3E/CD3 epsilon Protein

Cat. No. CDE-CM201

Description

| | |
|-------------------------|---|
| Source | Recombinant Cynomolgus CD3E/CD3 epsilon Protein is expressed from HEK293 with hFc tag at the C-Terminus. It contains Gln22-Asp117. |
| Accession | Q95LI5-1 |
| Molecular Weight | The protein has a predicted MW of 36.9 kDa. Due to glycosylation, the protein migrates to 43-48 kDa based on Bis-Tris PAGE result. |
| Endotoxin | Less than 1EU per µg by the LAL method. |
| Purity | > 95% as determined by Bis-Tris PAGE |

Formulation and Storage

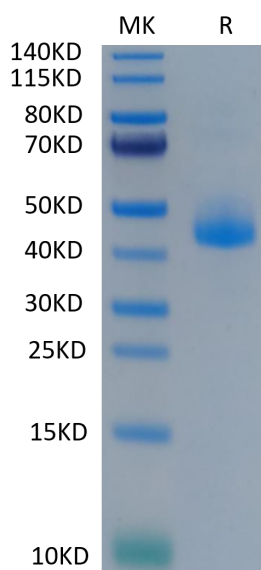
| | |
|-----------------------|---|
| Formulation | Lyophilized from 0.22µm filtered solution in PBS (pH 7.4). Normally 8% trehalose is added as protectant before lyophilization. |
| Reconstitution | Centrifuge the tube before opening. Reconstituting to a concentration more than 100 µg/ml is recommended. Dissolve the lyophilized protein in distilled water. |
| Storage | -20 to -80°C for 12 months as supplied from date of receipt. -80°C for 3 months after reconstitution. Recommend to aliquot the protein into smaller quantities for optimal storage. Please minimize freeze-thaw cycles. |

Background

CD3E, is a single-pass type I membrane protein. CD3 (cluster of differentiation 3) T cell co-receptor helps to activate both the cytotoxic T cell (CD8 naive T cells) and also T helper cells (CD4 naive T cells). It consists of a protein complex and is composed of four distinct chains. In mammals, the complex contains a CD3γ chain, a CD3δ chain, and two CD3ε chains.

Assay Data

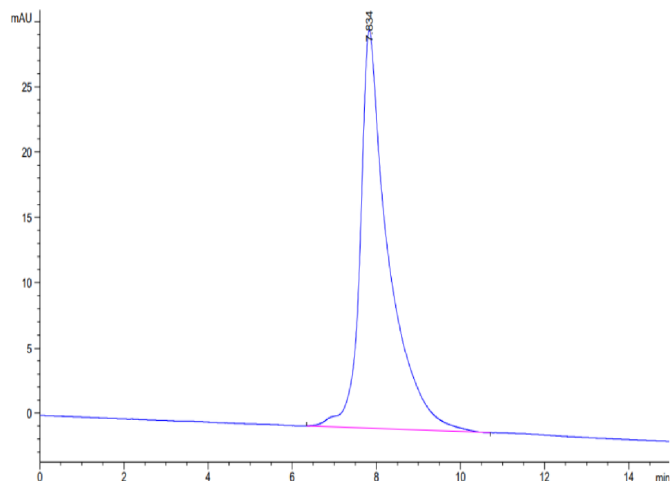
Bis-Tris PAGE



Cynomolgus CD3E on Bis-Tris PAGE under reduced condition. The purity is greater than 95%.

SEC-HPLC

Assay Data

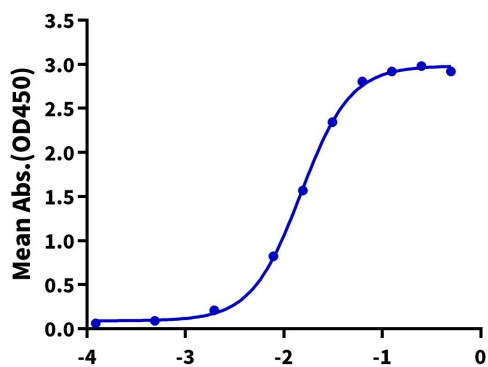


The purity of Cynomolgus CD3E is greater than 95% as determined by SEC-HPLC.

ELISA Data

Cynomolgus CD3E, hFc Tag ELISA

0.2µg Cynomolgus CD3E, hFc Tag Per Well



Immobilized Cynomolgus CD3E, hFc Tag at 2µg/ml (100µl/Well) on the plate. Dose response curve for Biotinylated Anti-CD3E Antibody, hFc Tag with the EC50 of 14.9ng/ml determined by ELISA (QC Test).

Log Biotinylated Anti-CD3 Antibody, hFc Tag Conc.(µg/ml)